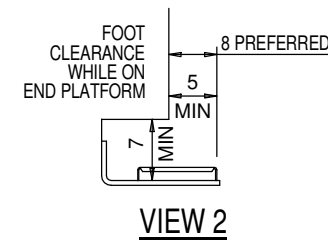
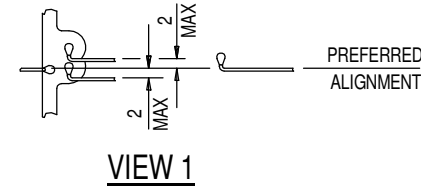
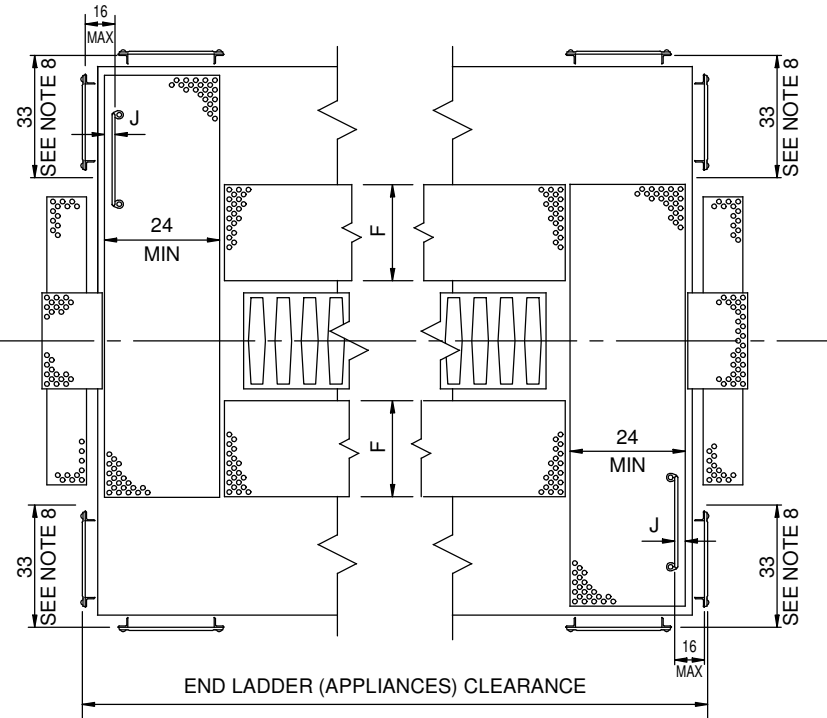
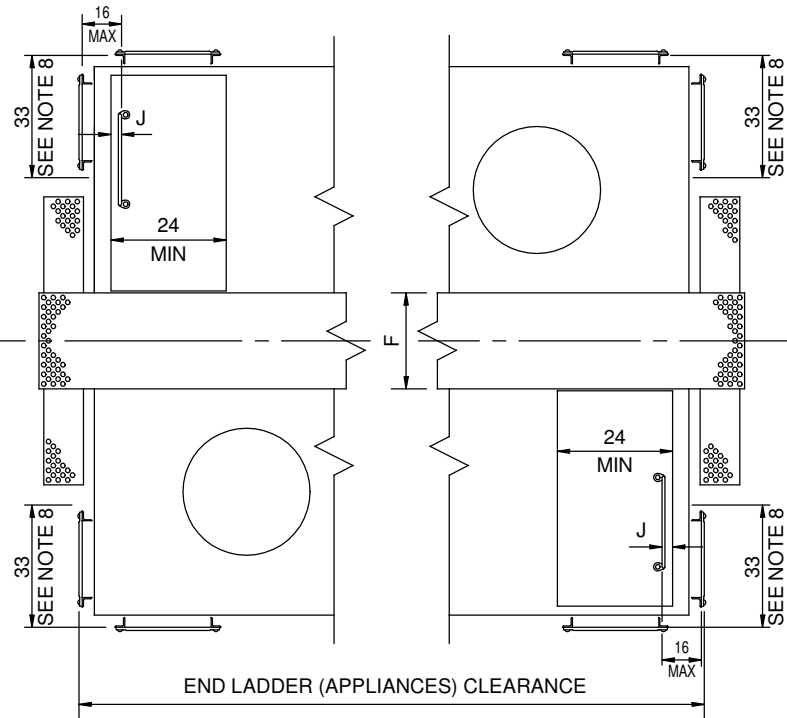


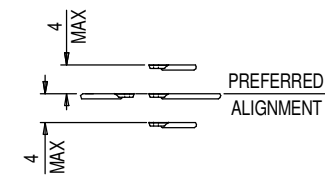
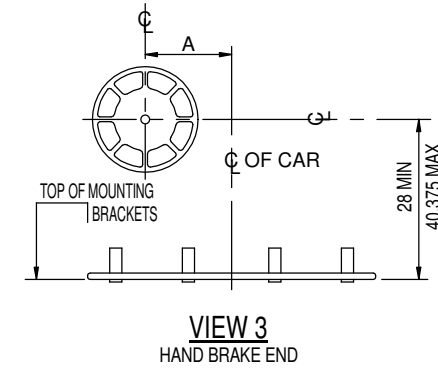
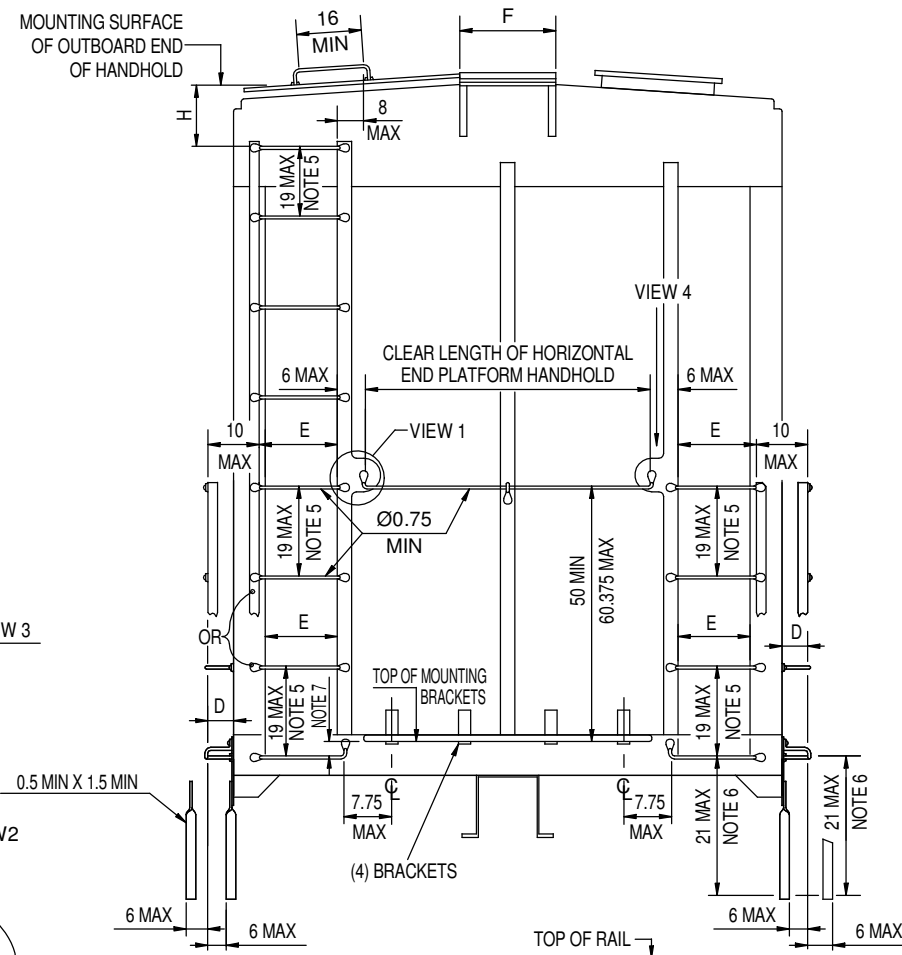
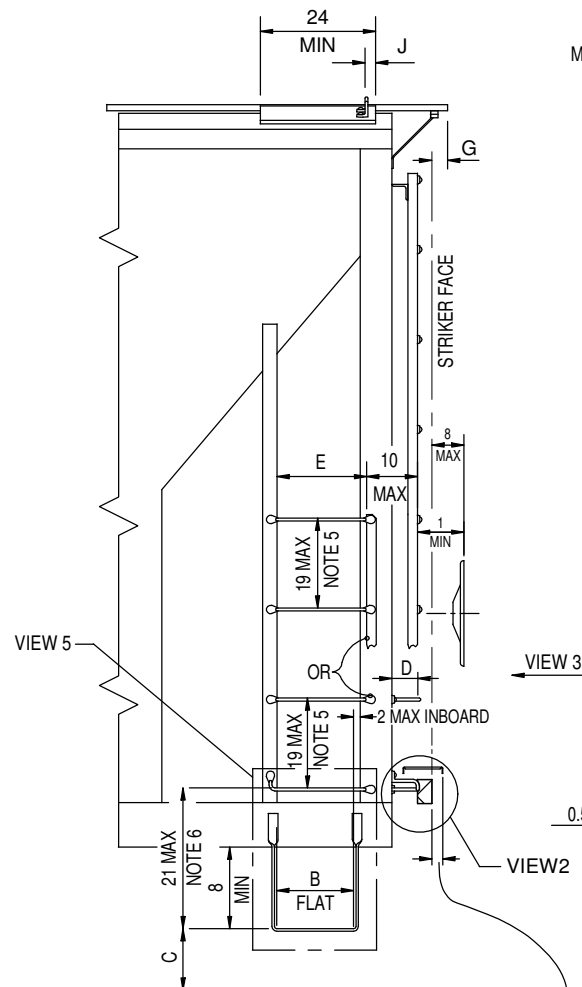
PLAN VIEW SINGLE RUNNING BOARD

PLAN VIEW DUAL RUNNING BOARDS

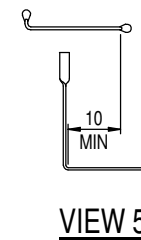


NOTES:

1. THIS FIGURE SHOWS ARRANGEMENT IN GENERAL, SEE TEXT OF APPENDIX "B".
2. ALL DIMENSIONS MEASURED IN INCHES.
3. ALL VERTICAL DIMENSIONS RELATIVE TO STEPS AND HORIZONTAL HANDHOLDS ARE MEASURED TO THE TOP SURFACES.
4. LOCATE HANDBRAKE AS SHOWN IN VIEW 3.
5. VERTICAL SPACING OF HANDHOLDS ON INDIVIDUAL END OR SIDE LADDER MAY VARY BY 2 INCHES MAX. VERTICAL SPACING BETWEEN INDIVIDUAL SIDE HANDHOLDS AND CORRESPONDING END HANDHOLDS MAY VARY BY 2 INCHES MAX.
6. IF BOTTOM TREAD OF SILL STEP IS MORE THAN 21 INCHES BELOW TOP SURFACE OF BOTTOM, SIDE AND END HANDHOLDS, INTERMEDIATE TREADS MUST BE APPLIED, SUCH THAT SPACING BETWEEN TREADS AND FROM TOP TREAD TO BOTTOM, SIDE AND END HANDHOLDS DOES NOT EXCEED 21 INCHES. VERTICAL CLEARANCES ABOVE ALL SILL STEP TREADS MUST BE NO LESS THAN 8 INCHES.
7. MOUNTING SURFACE OF END PLATFORM MOUNTING BRACKETS TO BE NO MORE THAN 2 INCHES ABOVE OR NO MORE THAN 4.375 INCHES BELOW TOP SURFACE OF NEAREST END LADDER TREAD.
8. SEE TEXT FOR END LADDER (APPLIANCES) CLEARANCE.



VIEW 4



VIEW 5

APPLIANCE	DIMENSIONS	DIMENSIONS	
		MAXIMUM	MINIMUM
BRAKE SHAFT	A	22	17
SILL STEPS (LENGTH OF TREAD)	B	-	12
SILL STEPS (HEIGHT ABOVE RAIL)	C	24	-
LADDERS & HANDHOLDS (CLEARANCE)	D	-	2
LADDER TREAD & HANDHOLD CLEAR LENGTH	E	-	16
RUNNING BOARD (WIDTH)	F	-	18
RUNNING BOARD (CLEARANCE)	G	6	-
LADDERS (SPACING FROM RUNNING BOARD)	H	18	12
ROOF HANDHOLDS (FROM EDGE OF RUNNING BOARD)	J	-	8

**SAFETY APPLIANCES FOR COVERED
 HOPPER AND OTHER HOUSE CARS
 WITH ROOF HATCHES**
 S-2044-05
 APPENDIX B
 FIGURE B1
 ADOPTED 0000

AMMENDED JULY 23, 2004
DRAFT

- 0 FOR CARS WITH CONVENTIONAL DRAFT GEARS OR CUSHIONING DEVICES HAVING LESS THAN 6 INCHES TRAVEL.
- 6 MAX. FOR CARS WITH CUSHIONING DEVICES HAVING 6 INCHES OR MORE TRAVEL WITH DEVICE CLOSED-FULL BUFF.